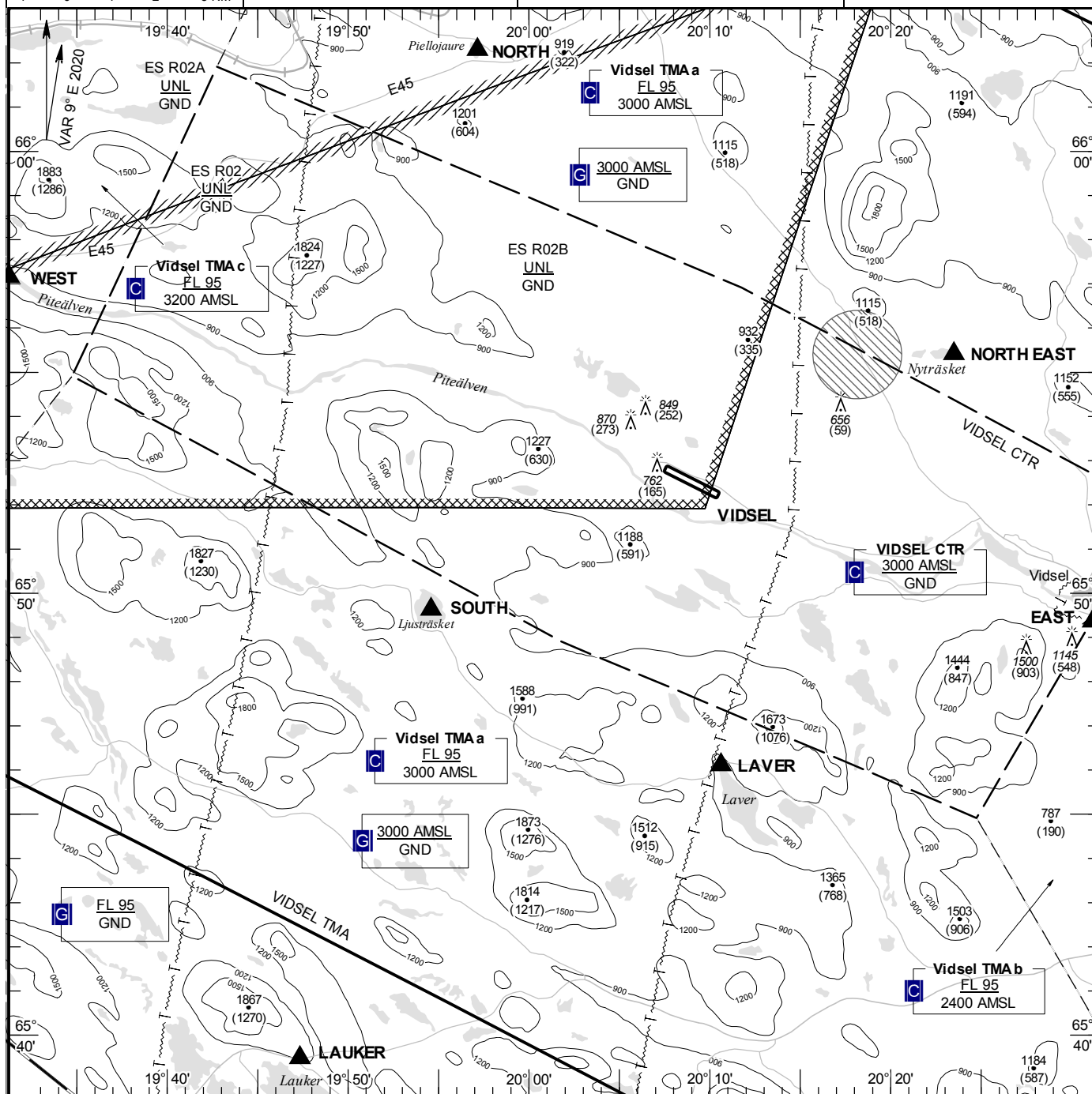


TA 5000 AMSL

AD 2 ESPE 9-1

**VIDSEL
SWEDEN**



NIL

RWY NR	THR ELEV	PAPI (MEHT)
11	596 ft	NIL
29	594 ft	NIL

Avoid Noise Sensitive Area below
3000 ft GND

See GEN 2.3

NORTH: Lake Piellojaure	660217N 0195709E
NORTH EAST: Lake Nyträsket	655524N 0202330E
EAST: Southeast of Vidsel village, south of Piteälven	654921N 0203110E
LAVER: Lake Laver	654606N 0201037E
SOUTH: Lake Ljusträsket	654937N 0195435E
LAUKER: Lake Lauker	653928N 0194720E
WEST: Bridge E45 over Piteälven	655709N 0193115E

SLENG: Lake Sleng 654907N 0192621E

NIL